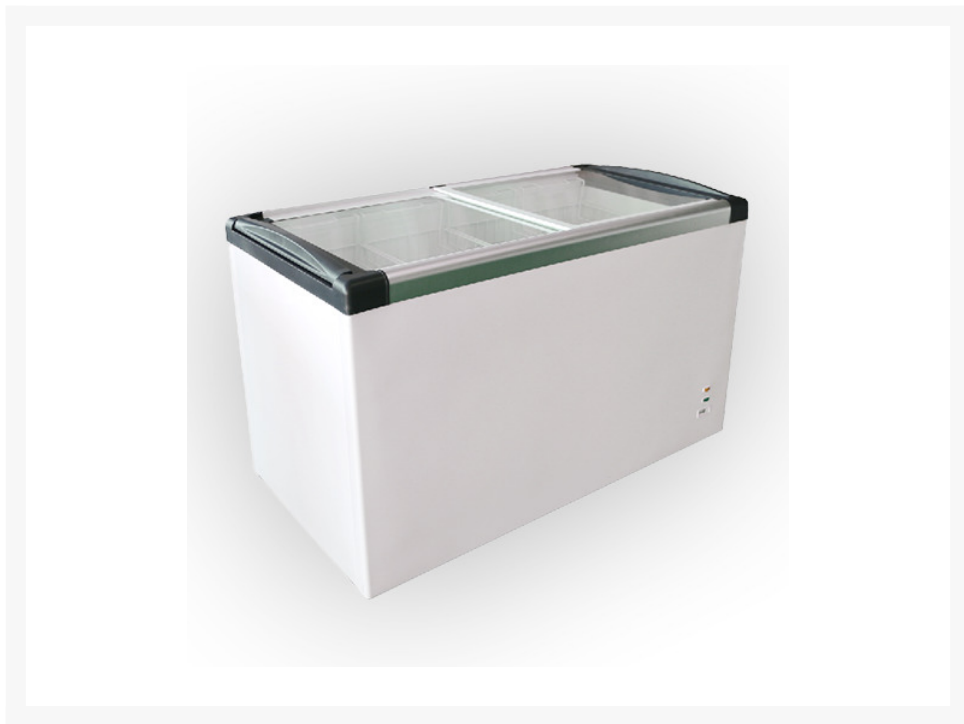




<https://www.commercialfridgefreezer.com.au/atosa-sd-520p-glass-top-chest-freezer-445-l/>

# Atosa SD-520P Glass Top Chest Freezer, 445 L



Atosa SD-520P Glass Top Chest Freezer, an optimal solution for a variety of commercial settings including restaurants, cafes, bars, supermarkets, and more. Featuring one door and a refrigeration volume of 445 liters, this freezer offers ample storage capacity for perishable items. Its dimensions measure 1530mm in width, 680mm in depth, and 850mm in height, providing generous storage space while maintaining a sturdy build with a weight of 69kg. Ideal for underbench installation, this freezer is versatile and adaptable to various environments. With its glass top design, it allows for convenient visibility of stored items, facilitating easy organization and retrieval. Whether in restaurants, convenience stores, medical facilities, or bakeries, the Atosa SD-520P Glass Top Chest Freezer offers reliable storage solutions to meet your needs.

## Description

## Introducing the Atosa SD-520P Glass Top Chest Freezer

, a versatile refrigeration solution designed to meet the diverse needs of commercial establishments such as restaurants, cafes, supermarkets, and more. With a refrigeration volume of 355 liters, this chest freezer offers ample storage space for a variety of perishable goods while maintaining optimal temperature levels for food preservation. Featuring a single door and a convenient

<https://www.commercialfridgefreezer.com.au/atosa-sd-520p-glass-top-chest-freezer-445-l/>

glass top design, the Atosa SD-420P measures 1270mm in width, 680mm in depth, and 850mm in height, making it suitable for placement in kitchens, food preparation areas, and retail settings. With a weight of 59 kilograms, this freezer is durable and reliable, ready to withstand the demands of daily use in busy environments.

The Atosa SD-520P is well-suited for a wide range of applications, including restaurants, cafes, bars, supermarkets, food production facilities, hospitality venues, schools, medical facilities, and more. Its versatile design and ample storage capacity make it an ideal choice for businesses seeking reliable refrigeration solutions. As a glass top chest freezer, the Atosa SD-520P provides easy visibility and access to stored items, allowing for efficient organization and retrieval of products. Its user-friendly features and robust construction make it a valuable asset for businesses looking to optimize their food storage and preservation processes. With its dependable performance and practical design, the Atosa SD-520P Glass Top Chest Freezer is the perfect solution for businesses looking to enhance their refrigeration capabilities and streamline their operations.

## Product Features

- New style flat sliding glass lid
- Fully Automatic operation
- 75 mm thickness insulation
- Exterior white finish
- Aluminum door frame
- Adjustable thermostat
- Main power indicator
- Defrost water drain hole
- Full basket as standard
- Interior LED light as standard
- Four castor wheels
- Environmentally friendly

## Additional Information

Country of Manufacture	Australia
External Colour	Stainless Steel
Brand	Atosa
Model	SD-520P
Warranty	2 year warranty on parts & labour
Climate / Ambient Temperature Rating	43
External Dimensions (mm)	1530mm (W) x 680mm (D) x 850mm (H)
Interior Lighting	Yes
Defrost Auto or Manual	Automatic
About the Product	ATOSA-SD-520P Glass Door Chest Freezer, available at an unbeatable price. Purchase the ATOSASD-520P and explore our wide range of commercial Glass Door Chest Freezer, all with Australia wide delivery.
Manufacturer's Suggested Retail Price	\$7,990.00