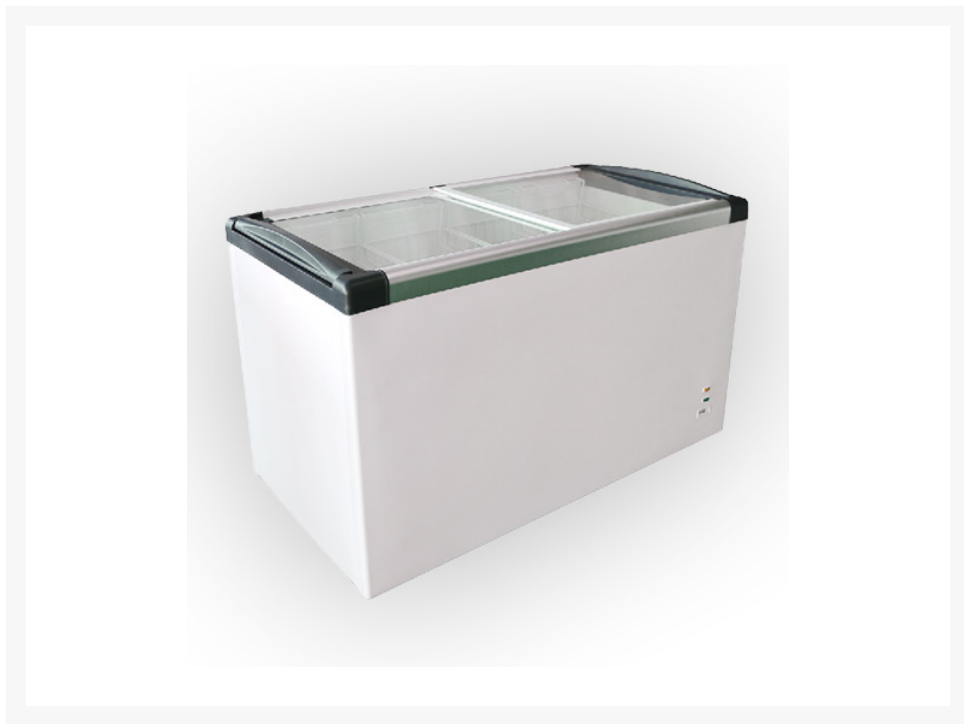




Atosa SD-420P Glass Top Chest Freezer, 355 L



Atosa SD-420P Glass Top Chest Freezer, designed for a variety of commercial settings including restaurants, cafes, bars, supermarkets, and more. With one door and a refrigeration volume of 355 liters, this freezer offers ample storage capacity for perishable items. Its dimensions measure 1270mm in width, 680mm in depth, and 850mm in height, providing generous storage space while maintaining a sturdy build with a weight of 59kg. Ideal for underbench installation, this freezer is versatile and adaptable to various environments. With its glass top design, it offers convenient visibility of stored items, allowing for easy organization and retrieval. Whether in restaurants, convenience stores, or medical facilities, the Atosa SD-420P Glass Top Chest Freezer provides reliable storage solutions to meet your needs.

Description

Introducing the Atosa SD-420P Glass Top Chest Freezer

, a versatile refrigeration solution designed to meet the diverse needs of commercial establishments such as restaurants, cafes, supermarkets, and more. With a refrigeration volume of 355 liters, this chest freezer offers ample storage space for a variety of perishable goods while maintaining optimal temperature levels for food preservation. Featuring a single door and a convenient glass top design, the Atosa SD-420P measures 1270mm in width, 680mm in depth, and 850mm in height, making it suitable for placement in kitchens, food preparation areas, and retail settings. With a weight of 59 kilograms, this freezer is durable and reliable, ready to withstand the demands of daily use in busy environments.

The Atosa SD-420P is well-suited for a wide range of applications, including restaurants, cafes, bars, supermarkets, food production facilities, hospitality venues, schools, medical facilities, and more. Its compact and versatile design makes it a practical choice for establishments with limited space or diverse refrigeration needs. As a glass top chest freezer, the Atosa SD-420P provides easy visibility and access to stored items, allowing for efficient organization and retrieval of products. Its user-friendly design and robust construction make it a valuable asset for businesses seeking reliable refrigeration solutions. With its versatile features and dependable performance, the Atosa SD-420P Glass Top Chest Freezer is an ideal choice for businesses looking to optimize their refrigeration capabilities and enhance their food storage and preservation processes.

Product Features

- New style flat sliding glass lid**
- Fully Automatic operation**
- 75 mm thickness insulation**

- **Exterior white finish**
- **Aluminum door frame**
- **Adjustable thermostat**
- **Main power indicator**
- **Defrost water drain hole**
- **Full basket as standard**
- **Interior LED light as standard**
- **Four castor wheels**
- **Environmentally friendly**

Additional Information

Country of Manufacture	Australia
External Colour	Stainless Steel
Brand	Atosa
Model	SD-420P
Warranty	2 year warranty on parts & labour
Climate / Ambient Temperature Rating	43
External Dimensions (mm)	1270mm (W) x 680mm (D) x 850mm (H)
Interior Lighting	Yes
Defrost Auto or Manual	Automatic
About the Product	ATOSA-SD-420P Glass Door Chest Freezer, available at an unbeatable price. Purchase the ATOSASD-420P and explore our wide range of commercial Glass Door Chest Freezer, all with Australia wide delivery.
Manufacturer's Suggested Retail Price	\$7,990.00