

**K
L
O
P
P
E
N
B
E
R
G**

AUSTRALIA MANUAL

DISPENSER MODEL

500-P

1000-P

1100-P



TOLL FREE: 1-800-346-3246

303-761-1615

FAX: 303-789-1741

MONDAY – FRIDAY

8 a.m. – 5 p.m.



KLOPPENBERG
2627 WEST OXFORD AVENUE
ENGLEWOOD, CO 80110

www.kloppenberg.com





DISPENSER FEATURES

- Increase profits by saving time on labor.
- Helps create a sanitary environment.
- Built for the serious customer that wants results without the glamour.
- Foot pedal activation eases bagging and reduces the liability risks.
- Standard outlet power cord plug in, no hard wiring required.
- **Ice is dispensed at a rate of 900 grams per second.**
- 100% Stainless steel auger – corrosion resistant, chain driven.
- 100% Stainless steel agitator – corrosion resistance, chain driven.
- Auger and agitator are easy to remove for maintenance and cleaning.
- 24 Volts foot activated moisture resistance pedal.
- Front access door to easily reach bridged ice for break up.
- Safety interlock door switch prevents operation when door is open.
- Sliding plexi-glass baffle to prevent ice spillage when door is opened.
- ½ HP motor with built in thermal overload protection, manual reset, 115/230 volts, 60hz, 1phz, 1725 rpm, 11 amps @ 115 volts, 5.5 amps @ 220 volts.
- Stainless steel exterior – galvanized steel back and bottom.
- Seamless one piece polyethylene liner 4.7 mm thick.
- 38 mm foamed-in-place insulation for maximum ice preservation.
- 38 mm stainless steel square tubing base provides for long term maximum durability.
- Adjustable stainless steel bullet feet standard, flanged feet or castors optional.
- Stainless steel adjustable shelf for bagging ice - fits 3.6 kg and 5.5 kg bags or bigger.
- All stainless steel is type 304.
- 1220 mm ice paddle provided, 1524 mm optional.





DISPENSER SIZES

MODEL	CAPACITY	WIDTH	DEPTH	HEIGHT	WEIGHT
500-P	294 kg	762 mm	915 mm	1804 mm	294 kg
1000-P	490 kg	1220 mm	915 mm	1804 mm	490 kg
1100-P	621 kg	1524 mm	915 mm	1804 mm	621 kg

- Depth is hopper only; add 140 mm in back for chain guard.
- Height is overall which includes 25.4 mm for top closure and 584 mm for tubing base.
- Weight is the weight of the machine only.
- Chute opening is 102 mm x 102 mm and bag shelf extends 279 from front of dispenser.

Model 500-P

This dispenser is the original dispenser with a single chute.

Model 1000-P

This dispenser is double the capacity of the 500-P model and has a single chute and two agitators.

Model 1100-P

This dispenser is two 500-P dispensers put together with a cutout between the two and has two chutes and two foot pedals and will operate individually of each other.





START UP PROCEDURE

A. Installation

1. Position unit with some clearance from the wall to the chain guard to facilitate maintenance and repair accessibility. 305 mm is recommended between wall and chain guard.
2. Level and plumb the dispenser and complete ice maker installation per ice maker manufacture's instructions.
3. Run drains from dispenser to floor drain or sink.
4. Plug dispenser cord into an adequately sized receptacle.

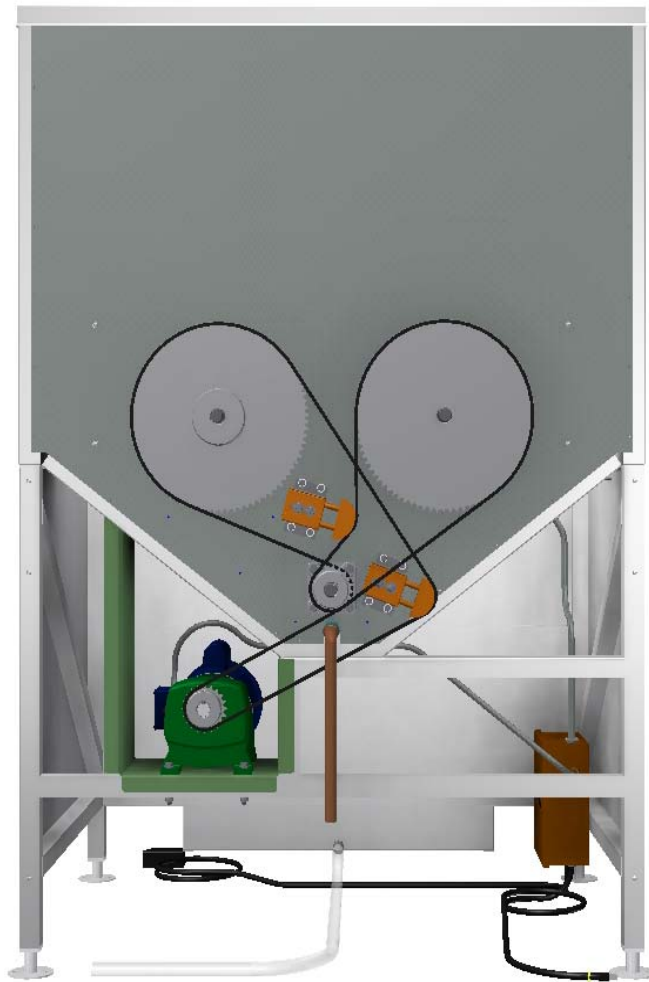
B. Cleaning

1. Perform a start up cleaning procedure for the ice maker as indicated by ice maker manufacture's operating manual.
2. Thoroughly clean and sanitize the dispenser per Kloppenberg's attached Cleaning and Maintenance Instructions.



 **KLOPPENBERG**

DISPENSER 1000-P





OPERATING INSTRUCTIONS

- ✓ Read Owner's manual prior to start up completely.
- ✓ Be sure proper container is positioned under ice chute and clean before dispensing ice.
- ✓ Use foot pedal to dispense ice. Dispensing stops when foot pedal is released.
- ✓ Use the dispenser regularly. Failure to do so may cause excessive ice bridging.
- ✓ Keep the door closed while operating. The unit will not operate while the door is open.
- ✓ Clean regularly following Kloppenberg's Cleaning and Maintenance instructions sent with each unit.
- ✓ Use the paddle provided to break up the ice only. Make sure to hang the paddle back up on the hook bracket provided to keep it clean.
- ✓ For normal bridging of ice above the agitator, use paddle as suggested on the next page.
- ✓ For severe ice freeze up in the lower portion of the dispenser, a water flush is recommended.
- ✓ Check the dispenser chute for ice clogs if the ice will not dispense with foot pedal activation.
- ✓ If unit overheats electrically, the motor's thermal overload switch will shut the motor off. After motor cools sufficiently, push the manual reset button on the motor to restore power.
- ✓ Safety goggles are recommended when breaking up the ice.
- ✓ Cover ice container when transporting it.
- ✓ Check for impurities and contaminants in the ice.





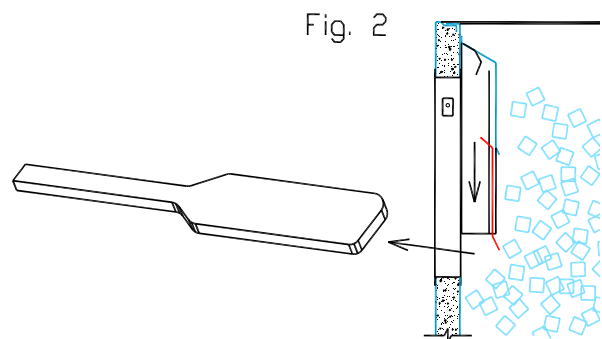
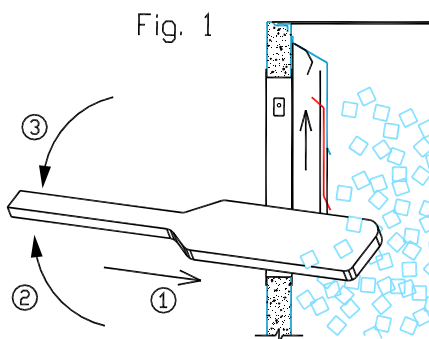
DON'T DO THIS...

- **Don't** put your hands, arms or any foreign objects into chute or hopper while unit is activated.
- **Don't** leave any foreign objects inside the bin.
- **Don't** let the ice sit for over 24 hours, ice may freeze up causing ice bridges.
- **Don't** over fill the containers. Ice will back up into the ice chute and cause significant blockage.
- **Don't** crawl under the bin other than to reset the overload switch.

All dispensers are equipped with a built in overload switch that takes several minutes to reset before it will operate again. When this happens it is generally due to ice bridging or ice freeze up.

BREAKING UP THE ICE

1. Grip the paddle provided and open the door. You should see a clear lexan door called the baffle.
2. Open the baffle just enough to push the ice paddle into the ice and rotate it up and down and side to side. (See Fig. 1)
3. Once the ice is broken up, remove the paddle and pull the baffle down to avoid ice spilling out, then close the door. (See Fig. 2)
4. Clean up any ice or water from around the dispenser before operating the dispenser again.





MOST COMMON REASONS WHY ICE WILL NOT DISPENSE

Is the door closed?

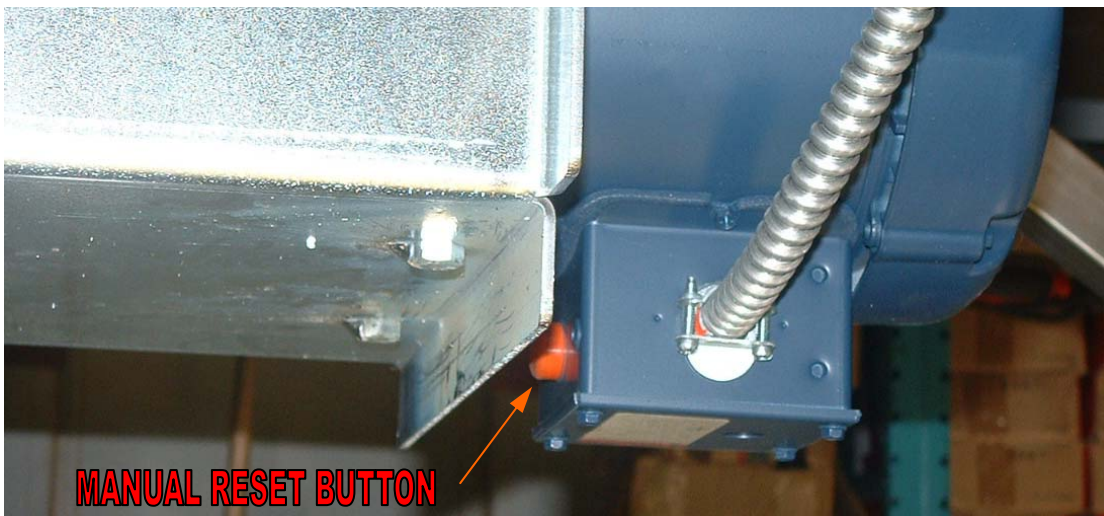
- ✓ The door must be closed or unit will not operate.

Is the motor running?

- ✓ If motor is not running, the overload switch on the motor probably has tripped. Push the manual reset button on the motor.
- ✓ If the motor is running, ice has probably bridged up. Use the paddle to break up the ice following the Breaking Up Ice procedure in this manual.
- ✓ If ice still doesn't dispense and the motor is running and ice has been broken up with the paddle and there is no blockage in the chute, check to see if the chain is moving when the motor is running.

**If you find the chain is not moving when the motor runs or you still can't get ice to dispense:
CALL A QUALIFIED SERVICE TECHNICIAN.**

There is a key between the motor and gear reducer and a key between the gear reducer and chain sprocket. If the chain isn't moving and the motor is running, then one of the keys is broken.





PREVENTIVE MAINTENANCE

ELECTRICAL WARNING

*****DISCONNECT POWER BEFORE SERVICING*****

- A. Weekly cleaning is recommended.
 - 1. Empty dispenser of all ice.
 - 2. Thoroughly clean and sanitize by following the attached Cleaning and Maintenance Instructions.
 - 3. Clean and flush drains.
- B. Lubricate every 6 months.
 - 1. Use a Phillip's screwdriver to remove the rear chain cover.
 - 2. Use a standard grease gun to lubricate shaft bearings.
 - 3. Spray a light coat of chain lube on the chains.

MAINTENANCE AND REPAIRS TO BE PERFORMED BY A QUALIFIED TECHNICIAN ONLY

- A. For service:
 - 1. Check power supply to the unit.
 - 2. Check to see if receptacle has power, if no power at receptacle then find and fix the problem, if receptacle has power go to 3.
 - 3. Check the low voltage 2 amp fuse, is it good; if bad replace. Fuse is located on side of electrical box.
 - 4. Check continuity of all wiring and switches: foot pedal switch and door switch.
 - 5. After checking wiring and switches, check to see if 220 volts is at the motor.
 - 6. If 220 volts is at the motor, push the manual reset button on the motor. The overload switch on the motor is possibly tripped.
 - 7. If the motor still doesn't work remove lower chain and see if motor works.
 - 8. If motor still doesn't work then motor is bad or gear reduction box is bad. Service or replace motor or gear reduction box.





PRIOR TO ANY SERVICE OR REPAIR – DICONNECT POWER CORD BY UNPLUGGING IT FROM THE RECEPICAL

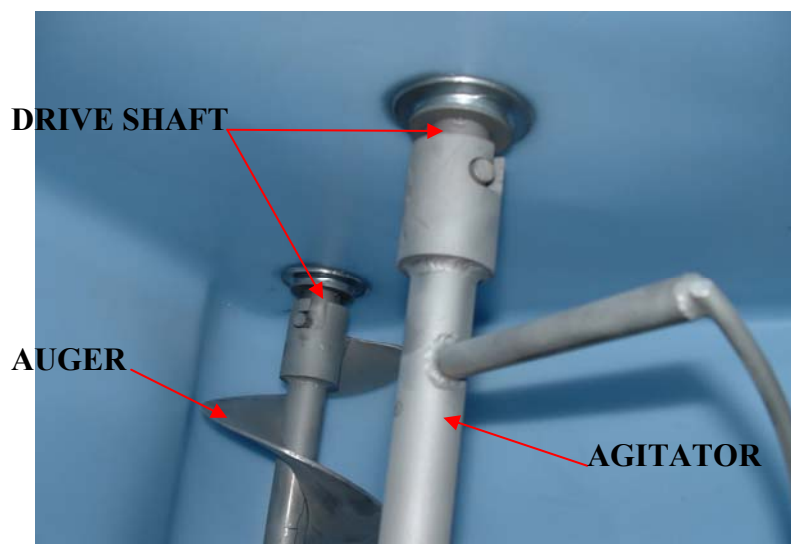
AGITATOR REPLACEMENT PROCEDURE


1. Removing a damaged agitator is accomplished through the upper access door. Open the door and raise the lexan baffle up to the locked position.
2. Loosen the shaft collar at the front of the agitator with a 5/32” Allen wrench.
3. Turn the agitator counterclockwise; pull it from the drive shaft at the back wall. Then pull the back of the agitator up enough to clear the drive shaft.
4. Now push it to the back wall until it clears the front bracket and bushing.
5. Remove the agitator through the access door and make sure any broken off pieces are removed as well or auger damage will occur.
6. Reverse the procedures for installing a new agitator.

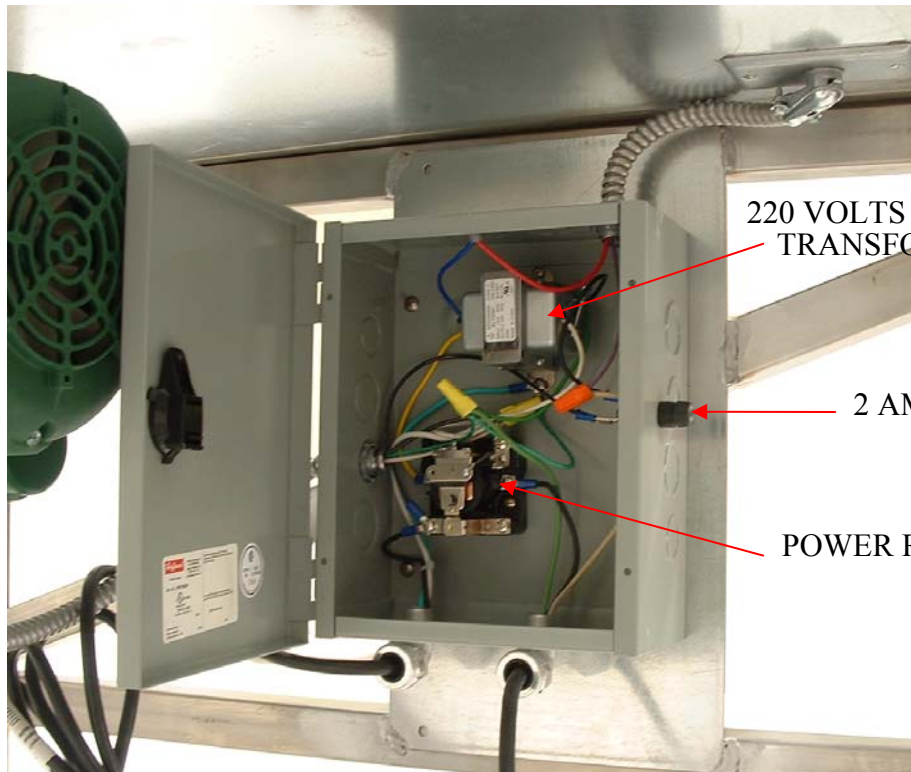
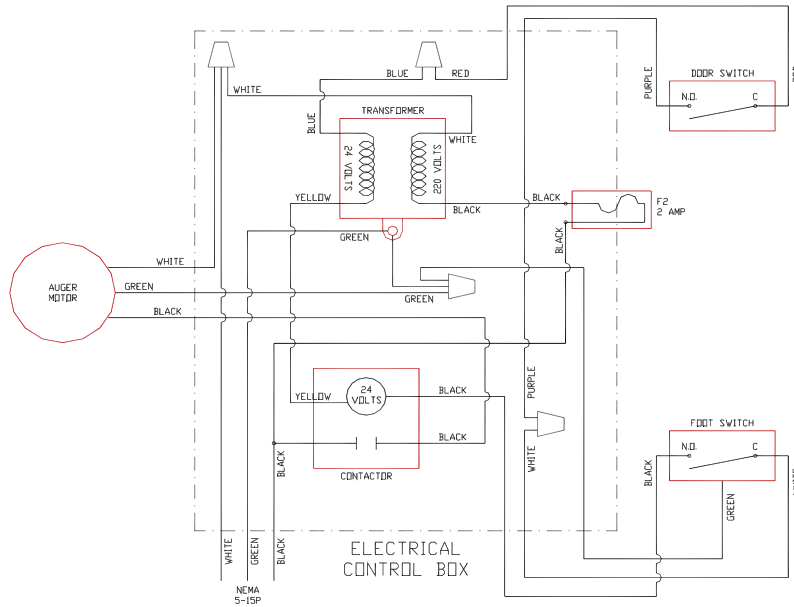
AUGER REPLACEMENT PROCEDURE

In the event the ice dispenser auger in the bottom of the unit requires replacement or repair, the removal sequence is as follows:

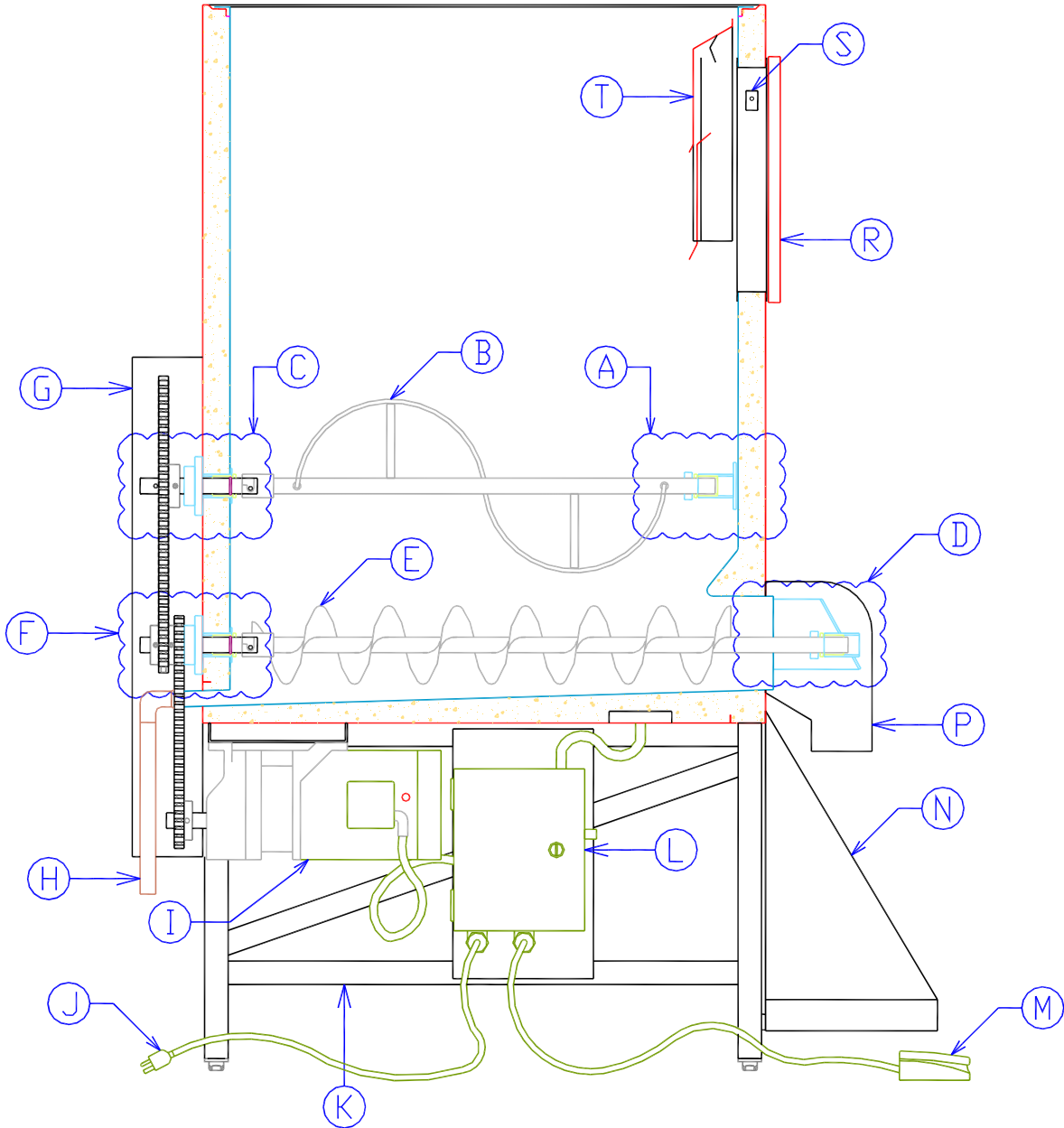
1. Remove the dispenser chute by removing the screws with a hex key.
2. Remove the front bearing bracket by removing the bolts with a 7/16” socket or wrench.
3. Remove the auger by turning it counterclockwise and then pull it towards you to remove it
4. Make sure any broken off pieces are removed before installing a new auger.
5. Reverse the procedures for installing a new auger.




KLOPPENBERG
ELECTRICAL SCHEMATIC



DISPENSER SECTION VIEW





DISPENSER SECTION VIEW REFERENCE KEY

LOCATION

DESCRIPTION

A.	AGITATOR FRONT ASSEMBLY
B.	AGITATOR
C.	AGITATOR REAR ASSEMBLY
D.	AUGER FRONT ASSEMBLY
E.	AUGER
F.	AUGER REAR ASSEMBLY
G.	CHAIN COVER
H.	COPPER DRAIN
I.	MOTOR/REDUCER ASSEMBLY
J.	POWER CORD
K.	SUPPORT FRAME ASSEMBLY
L.	ELECTRICAL BOX ASSEMBLY
M.	FOOT PEDAL SWITCH
N.	BAG/CONTAINER SHELF
P.	ICE CHUTE
R.	DOOR ASSEMBLY
S.	DOOR SWITCH
T.	ICE HOOD/BAFFLE



DISPENSER PARTS LIST

PART#	DESCRIPTION	PART#	DESCRIPTION
AGITATOR FRONT ASSEMBLY		4080021	COPPER DRAIN ASSEMBLY
4080023	AGITATOR FRONT BRACKET		MOTOR ASSEMBLY
2700042	AGITATOR BUSHING UHMWP		½ HP 220 VOLTS MOTOR
2300044	SHAFT COLLAR	2400088	GEAR REDUCER
4080005	AGITATOR		MOTOR MOUNTING BRACKET
AGITATOR REAR ASSEMBLY		2400079	DRIVE SPROCKET SMALL
2700065	AGITATOR BUSHING UHMWP		POWER CORD
2400084	“O” RING (BLACK RUBBER)		SUPPORT FRAME ASSEMBLY
4080020	DRIVE SHAFT ASSEMBLY	4080016	38mm S/S TUBBING FRAME
2400083	FLANGE MOUNT BEARING	2300040	38 mm ADJUSTABLE FOOT (OPTIONAL)
2400081	AGITATOR DRIVE SPROCKET LARGE	2300041	ADJUSTABLE FLANGED FOOT
2300052	AGITATOR DRIVE CHAIN 97 LINKS	2300016	127 mm CASTER (OPTIONAL)
2300029	MASTER CHAIN LINK		ELECTRICAL BOX ASSEMBLY
2400078	CHAIN TENSIONER		ELECTRICAL BOX
	CHAIN TENSIONER BRACKET LARGE	2400076	2 AMP FUSE
AUGER FRONT ASSEMBLY		2400072	TRANSFORMER 220 VOLTS TO 24 VOLTS
4080022	AUGER FRONT BRACKET ANGLED	2400073	POWER RELAY
2700048	AUGER BUSHING UHMWP	2400103	FOOT PEDAL SWITCH
2300044	SHAFT COLLAR		CONTAINER SHELF ASSEMBLY
4080006	AUGER	4080025	DRIP TRAY ASSEMBLY
AUGER REAR ASSEMBLY		3080030	PERFORATED BAG SHELF ADJUSTABLE
2700087	AUGER BUSHING UHMWP	2700041	FRONT ICE CHUTE
2400084	“O” RING (BLACK RUBBER)		DOOR ASSEMBLY
4080020	DRIVE SHAFT ASSEMBLY	4030004	DOOR ASSEMBLY
2400083	FLANGE MOUNT BEARING	4030006	LATCH ATTACHED TO BIN
2400079	AUGER DRIVE SPROCKET SMALL	3030034	CATCH ATTACHED TO DOOR
2400079	AGITATOR DRIVE SPROCKET SMALL	2750004	4-SIDED GASKET
2300051	AUGER DRIVE CHAIN 51 LINKS	2400085	DOOR SWITCH
2300029	MASTER CHAIN LINK	4030002	ICE HOOD/BAFFEL ASSEMBLY
2400078	CHAIN TENSIONER	2700001	1220 mm ICE PADDLE
	CHAIN TENSIONER BRACKET SMALL	2700116	1524 mm ICE PADDLE (OPTIONAL)
3080027	CHAIN COVER	3030052	ICE PADDLE BRACKET

\$50 PER ORDER MINIMUM, OVER \$100 ORDER ADDS A \$10 HANDLING FEE PLUS THE UPS GROUND CHARGE. BETWEEN \$50 AND \$100 HANDLING FEE IS PRORATED DETERMINED BY THE WEIGHT THAT IS NO LESS THAN \$12.50 AND NO MORE THAN \$25 AND INCLUDES UPS GROUND





SHIPPING ASSEMBLY INSTRUCTIONS

1. Insert auger into liner opening, placing drive end onto drive shaft and turn auger till it is locked on drive shaft pins.
2. Place shaft collar on auger shaft end leaving it loose.



3. Next put auger bracket onto auger shaft and mount to front of bin using 1/4-20 hex-head screws with lock washer. Lift auger and bracket up till there is at least a 1/4" clearance between auger and blue liner and tighten screws.
4. Pull shaft collar to poly bushing in auger bracket and tighten set-screw with a 5/32" allen wrench.



5. Install gray poly chute with #10-32 phillips screws. Make sure not to over tighten screws or they will pull through the poly.
6. Now follow the start up procedure on page 3 of this manual to finish installation of dispenser and ice machine.





Manufacturer Warranty

Kloppenberg warrants to the original purchaser that it will repair or replace at its own cost any all- stainless commercial ice dispensing unit of its manufacture bearing the name Kloppenberg due to factory defect in material and/or workmanship occurring within the first year from the date of sale. All Kloppenberg products must be installed, adjusted and maintained in accordance with the procedures set forth in the Maintenance Instructions and General Conditions provided with each unit to qualify for subject warranty.

This warranty does not include parts or labor coverage for a factory component failure resulting from:

- ▶ Failure to clean and maintain as set forth in the Maintenance Instructions and General Conditions Manual
- ▶ Failure to practice Ice Management throughout daily operational functions
- ▶ Adverse operating conditions
- ▶ Drain line malfunctions
- ▶ Water content irregularities for any reason

All decisions regarding defects in material or workmanship or accident, alteration or misuse or improper maintenance or installation shall be made by Kloppenberg and Company and shall be final and binding upon the parties. All claims must be submitted on a Warranty Pre-Authorization Form that requires the ice dispenser model number, serial number, and original date of sale and installation and customer name.

This warranty is applicable only in the United States and Canada. Kloppenberg and Company assumes no liability for incidental or consequential damages of any kind for damages resulting in whole or in part from misuse or inadequate maintenance of the product or any part thereof.

THE WARRANTY DESCRIBED IN THIS PARAGRAPH SHALL BE IN LIEU OF ANY OTHER WARRANTY EXPRESS OR IMPLIED, INCLUDING BUT NOT LIMITED TO, ANY IMPLIED WARRANTY OF MERCHANTABILITY OR FITNESS FOR A PARTICULAR PUPOSE

**Kloppenberg & Company 2627 W Oxford Ave Englewood, CO 80110
(303) 761-1615 (800) 346-3246 FAX303-789-1741**

ALL SUBJECT WARRANTY MATTERS MUST BE PRE-AUTHORIZED.

