

If there is a fault with the appliance, inform: \_\_\_\_\_

Model ID / \_\_\_\_\_

Inventory number: \_\_\_\_\_

## Quick Start Guide for everyday use

### Information about using this Quick Start Guide:

- This Quick Start Guide is not a substitute for the full operating instructions nor is it a substitute for appliance training.
- This Quick Start Guide provides support for everyday use and handling the appliance.
- Read the full operating instructions and the safety notes contained therein.
- This Quick Start Guide is for: SRFvh 40../55..
- Scanning the QR code will open the full operating instructions:



### Intended use

This laboratory refrigerator is suitable for professional storage of products at temperatures between 3 °C and 16 °C.

### Foreseeable incorrect use

Do not use the appliance for the following applications:

- Storage and refrigeration of:
  - Chemically unstable, flammable or corrosive substances
  - Blood, plasma or other body fluids for the purpose of infusion, application or introduction in the human body
- Use in potentially explosive atmospheres
- Use outdoors or in areas exposed to dampness and splashing water

### When stocking, observe the following points:

- Position grid shelves according to the height required.
- Observe maximum load.
- When the storage temperature has been reached, load the appliance (compliance with cold chain).
- Keep the ventilation slots of the recirculation fan free in the interior.
- Produce for cooling must not come into contact with the evaporator on the rear wall.
- Keep liquids in closed containers.
- Leave space when storing refrigerated goods to ensure good air circulation.

## Status display

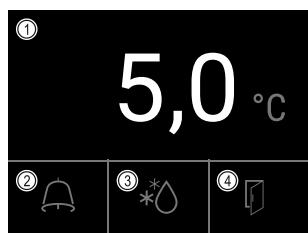


Fig. 155

(1) Actual temperature  
(2) Alarm status

(3) Defrosting status  
(4) Door opening status

## Navigation with the touch display

Navigation	Description
	<b>Swipe right or left</b> Navigates within the menu.
	<b>Press briefly</b> Activates/deactivates function. Confirms selection. Opens submenu.
	<b>Long press (3 seconds)</b> Activates/deactivates function.
	<b>Brief press of Back symbol</b> Jumps back one level.

## Displaying temperature recording

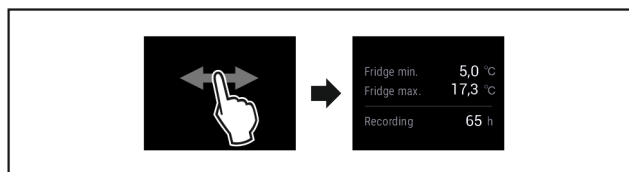


Fig. 156

► Complete steps (see Fig. 5562).

## Resetting temperature recording

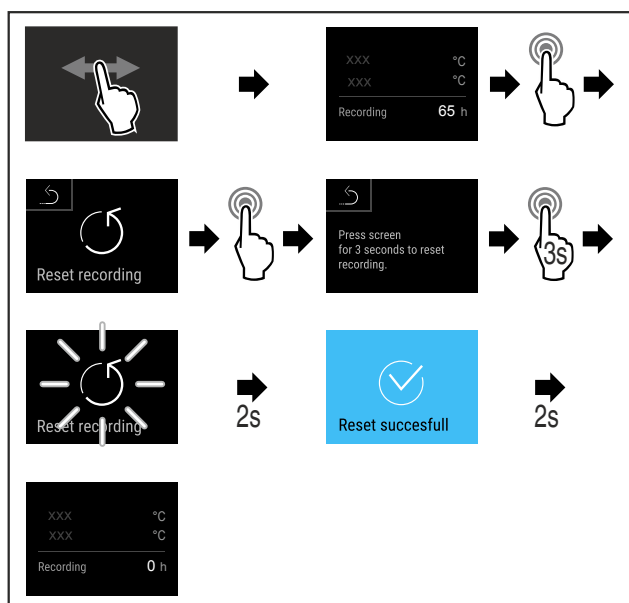


Fig. 157

► Complete steps (see Fig. 5563).

# Quick Start Guide for everyday use

## Unlocking appliance

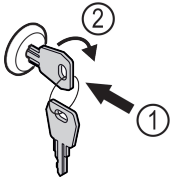


Fig. 158

- ▶ Insert the key. Fig. 158 (1)
- ▶ Turn the key clockwise by 90°. Fig. 158 (2)
- ▷ The appliance is unlocked.

## Displaying alarm log

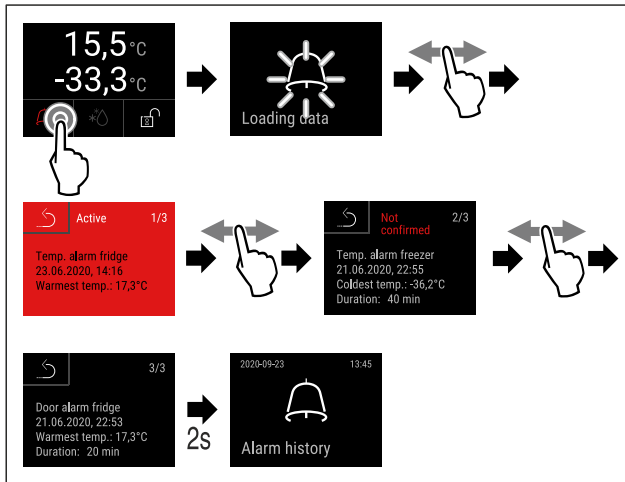


Fig. 159 Example shows an active alarm, an unconfirmed alarm, and a confirmed alarm.

- ▶ Complete steps (see Fig. 5565).
- ▷ Alarm log shows active, confirmed or unconfirmed alarms (maximum 10 alarms).
- ▷ To delete the alarm log: See operating instructions.

## Cleaning appliance

- ▶ Empty the appliance.
- ▶ Pull out the mains plug.
- ▶ Observe the information in the operating instructions.
- ▶ Dry the appliance and equipment thoroughly after cleaning.
- ▶ Connect the appliance.
- ▶ Switch on the appliance.
- ▶ Load the appliance once the storage temperature is reached.



## What should I do if there is a fault?

A message appears in the display if there is a fault. Messages have different meanings:

Symbol colour in the display	Meaning	Remedy
<b>YELLOW</b>	<b>Reminder</b> Reminder of general procedures. You can carry out these procedures to eliminate the message.	Consult the operating instructions and perform the troubleshooting steps.

Symbol colour in the display	Meaning	Remedy
<b>RED</b>	<b>Warning</b> Appears when there are malfunctions. You can eliminate simple malfunctions yourself.	Consult the operating instructions and perform the troubleshooting steps.
If you cannot remedy the fault yourself, contact a competent member of staff or your nearest customer service outlet.		

Cut out the page

